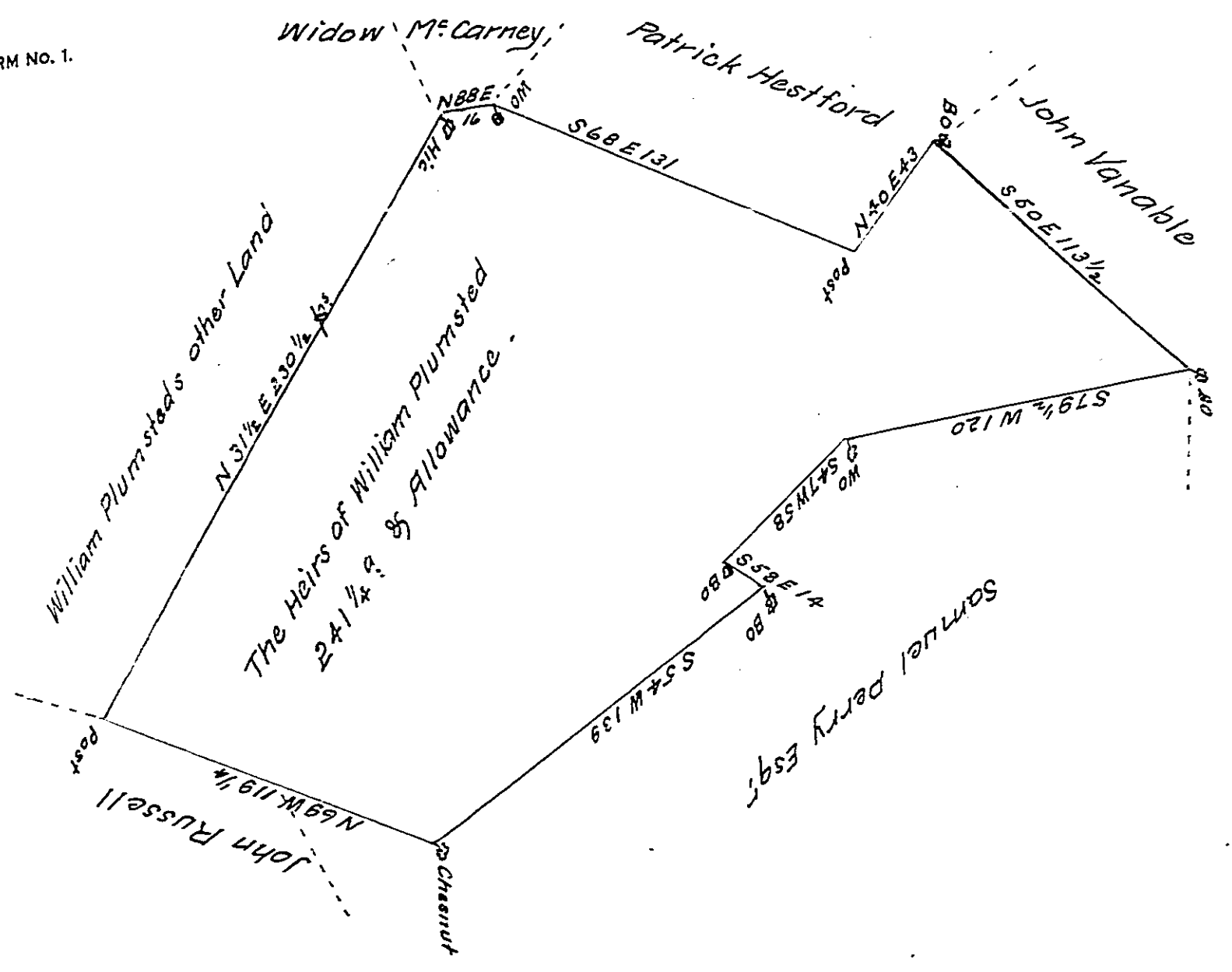


FORM No. 1.



A Draught of a Tract of Land situate in Hamilton Township  
 in the County of Cumberland Containing Two Hundred and forty  
 one Acres and a quarter of an Acre and the usual Allowance of  
 Six p. Cent for Roads &c. Survey'd for the Heirs of William Plumsted

John Armstrong

D.S.

To John Luker Esqr  
 Surveyor General

IN TESTIMONY that the above is a copy of the original remaining on file in  
 the Department of Internal Affairs of Pennsylvania, made  
 conformably to an Act of Assembly approved the 16th day of  
 February 1833, I have hereunto set my hand and caused  
 the Seal of said Department to be affixed at Harrisburg,  
 this twelfth day of November 1907.

Henry Howell  
 Secretary of Internal Affairs.